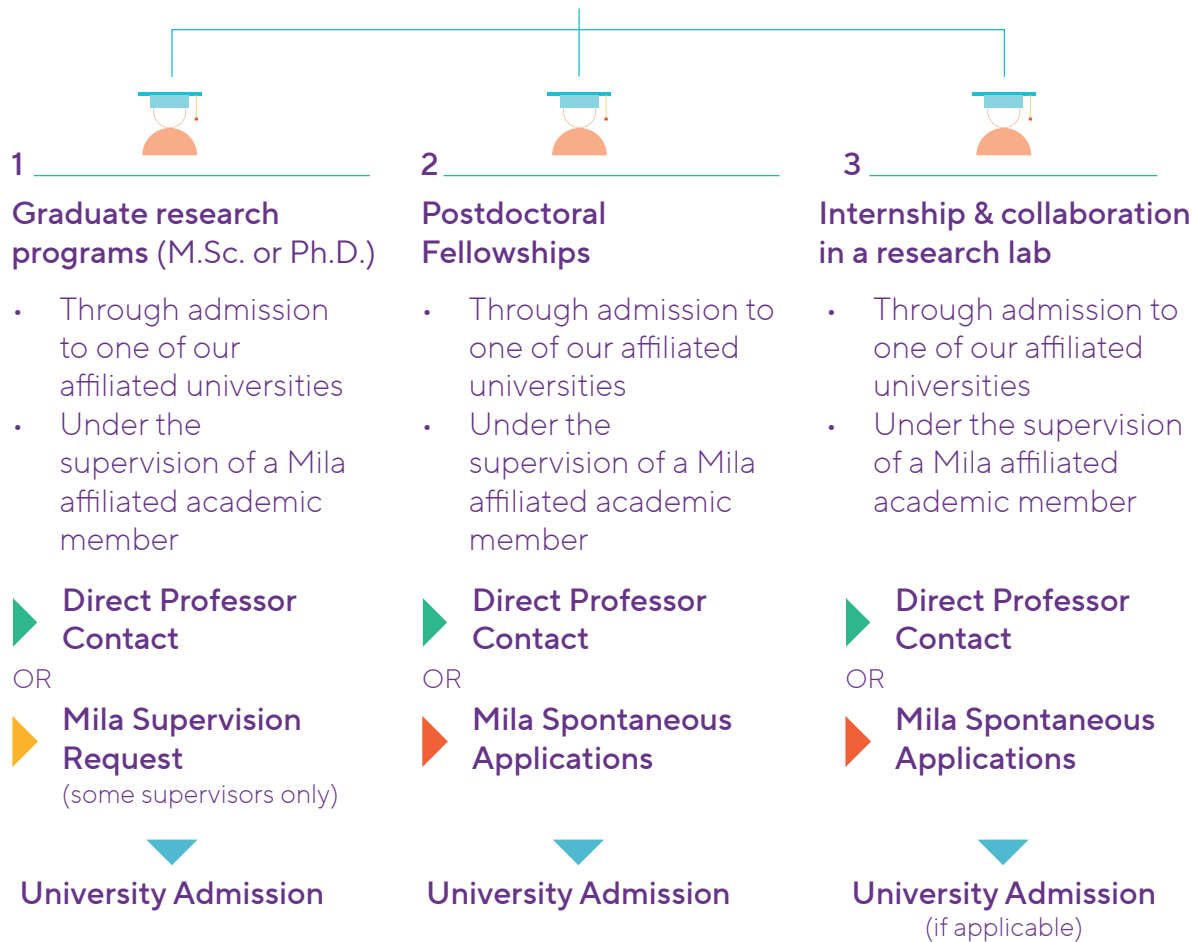


How to be part of Mila

Mila is a research institute - not a university

Mila hosts professors from more than 10 different universities and schools.

Research students or research collaborators need to be supervised by a Mila affiliated Faculty member from one of our affiliated universities and schools

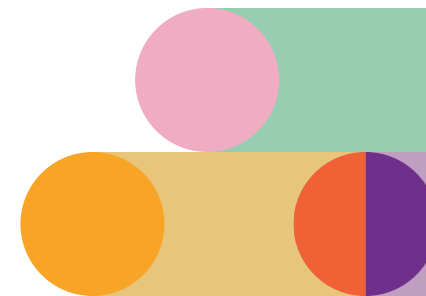


Professional or non-thesis Master students don't need to find a supervisor



4 Professional and Non-Thesis study program

- Via the admission to one of the 2 affiliated universities offering these programs (UdeM & McGill)
- No need to find a supervisor to apply for any of these two programs



Two ways to FIND a Mila supervisor and APPLY through Mila

We strongly advise you to apply to Mila to increase your chances of being matched with a professor






Other ways to FIND a Mila supervisor and/or become affiliated with Mila

Direct professor contact

University admission

See information available through the personal websites of Mila affiliated Faculty Members

Professional and Non-Thesis study program at UdeM and McGill

	Mila Supervision Request Process	Mila spontaneous application	Direct professor contact	University admission
To apply for ▶	Graduate research programs (M.Sc. or Ph.D.)	Internships & collaboration Postdoctoral fellowships	Ph.D. / M.Sc. research Internship & collaboration Postdoctoral fellowships	Professional and Non-Thesis Masters
When to apply ▶	October 15 to December 1	All year round	All year round	According to each affiliated university or school calendar
Selection dates ▶	February 1 to March 31	At any time, according to ad-hoc needs of each Mila affiliated professor	At any time, according to ad-hoc needs of each Mila affiliated professor	According to each affiliated university or school calendar
To apply ▶	 Supervision request process	 Postdoctoral fellowships  Internships	 Professors directory Mila	 Professional and Non-Thesis Masters

Example of a pathway - From the Mila Supervision Request Process to the start of the graduate program



University admission

Admission to the university affiliated with the Faculty's member is required for all potential graduate students or postdoctoral fellows